

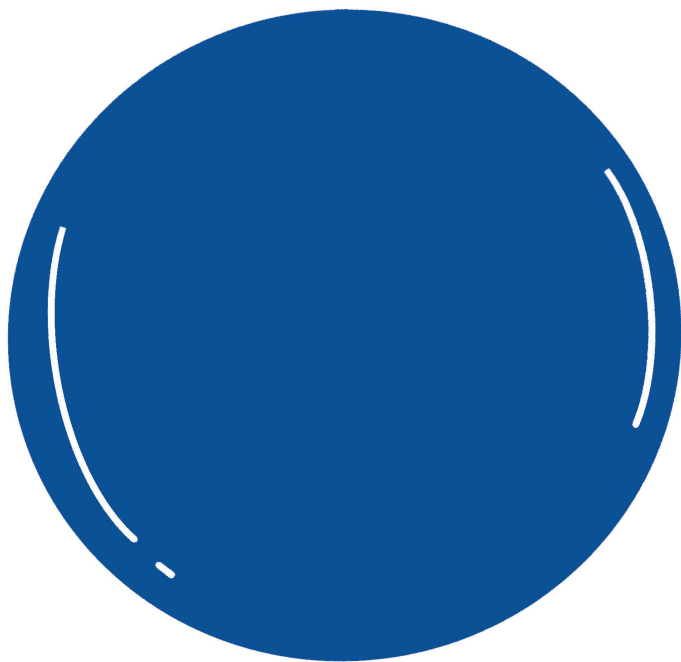
FAMILY KIT

For adults and children
aged 6 and upwards
to share while exploring
the exhibition together

JEFF
KOONS
SHINE

JEFF KOONS SHINE

The exhibition in Palazzo Strozzi showcases the work of Jeff Koons, one of the most famous artists in the world today. He seeks inspiration for his work in both everyday objects and the art of the past, transforming everything into large sculptures and brightly coloured paintings.

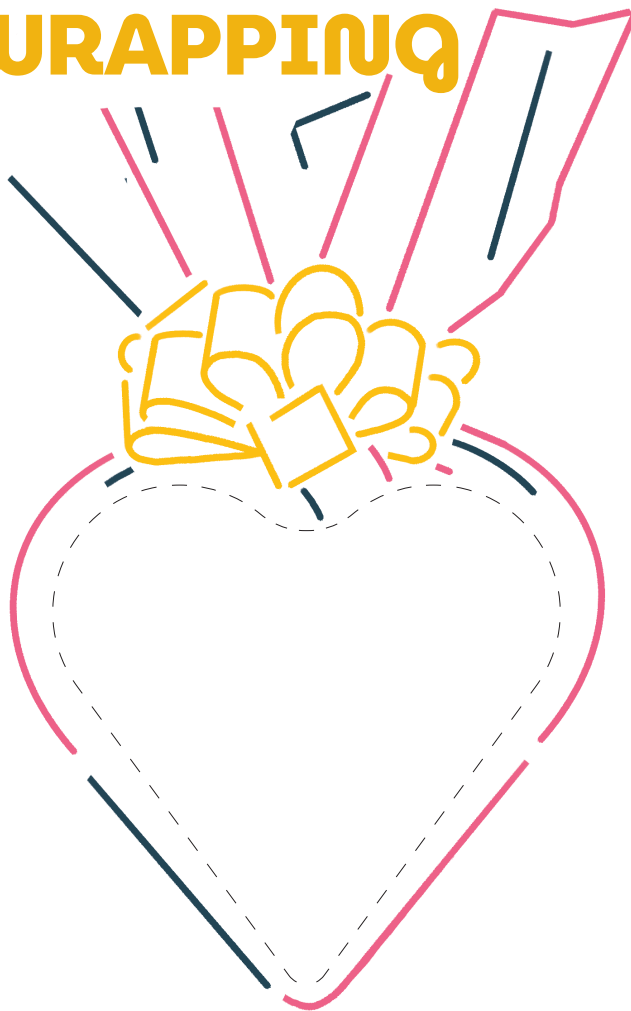


His gleaming art is made of surfaces that shine like mirrors, reflecting everything in front of them; that way, we too become part of his works of art when we look at them!

**USE THE FAMILY KIT
to tour the exhibition in stages.
The illustrations indicate the exhibits
you should look at more closely.**

UNWRAPPING ART

ROOM 1



A large heart-shaped parcel: what could it possibly contain? Exchanging gifts with family and friends is a way of celebrating birthdays or special occasions. We give and receive toys, clothes, chocolates, flowers, and even experiences to do together.

Gifts always come wrapped in coloured paper so as not to give the surprise away, just like in Koons' work.

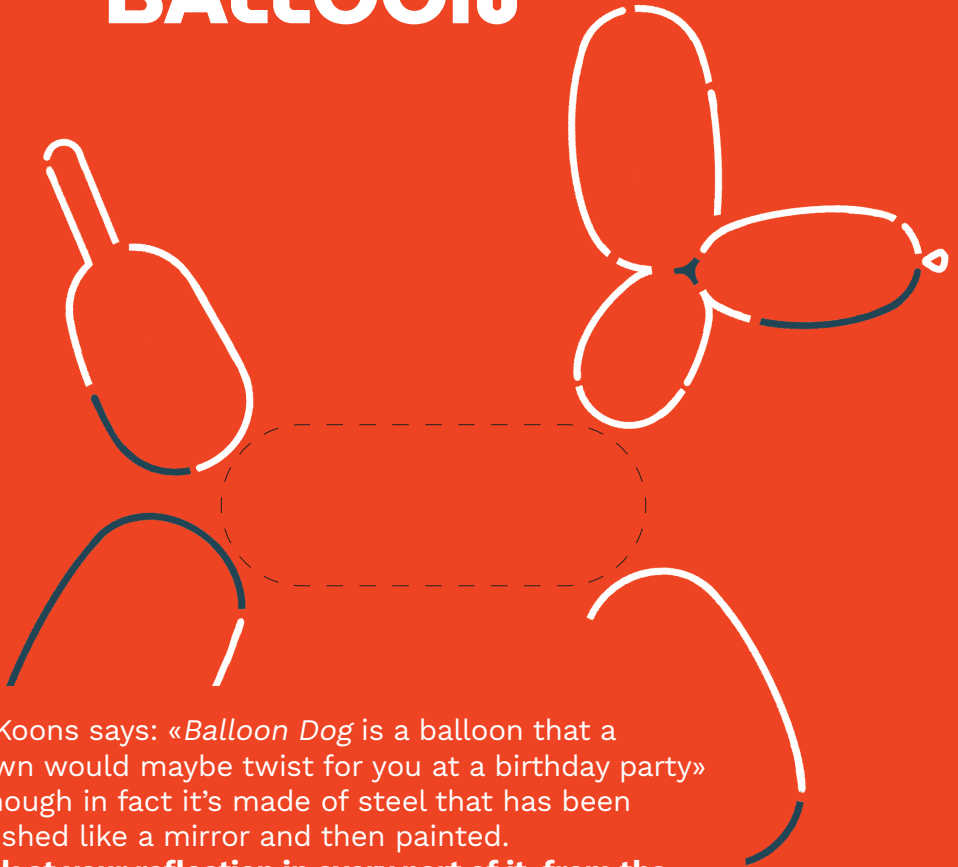
Think of the:

- **largest and smallest**
- **nicest and nastiest**
- **most unexpected and most boring gift you've ever given or received.**

Talk about it with the people you're with!

A GIANT BALLOON

ROOM 3



As Koons says: «*Balloon Dog* is a balloon that a clown would maybe twist for you at a birthday party» although in fact it's made of steel that has been polished like a mirror and then painted.

Look at your reflection in every part of it, from the paws to the tail. What do you look like?

Jeff Koons likes using steel for his sculptures because it's cheap and extremely solid, and it's commonly used for making pots and pans or cutlery. Polished steel shines just like all the exhibits in Room 2 that you've just come through.

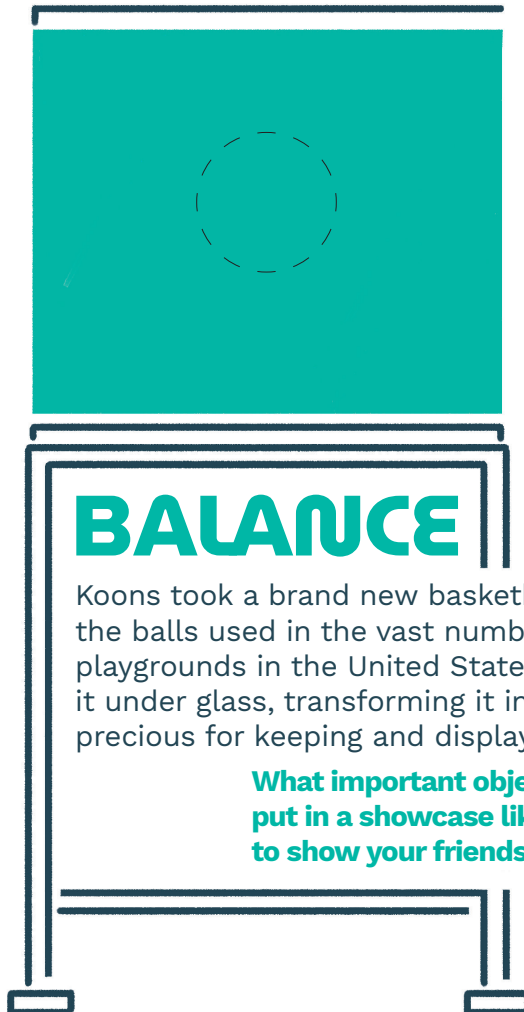
AT HOME

Find different surfaces that reflect your image like *Balloon Dog*. What happens when you reflect your image on a smooth, matt or irregular surface?

AN IMPOSSIBLE

ROOM 4

Sometimes artists make things happen that look impossible! For his work entitled *One Ball Total Equilibrium Tank*, Jeff Koons and a scientist developed a special liquid to cause a ball to float in a perfect balance in the middle of a showcase.



Koons took a brand new basketball just like the balls used in the vast number of playgrounds in the United States and put it under glass, transforming it in something precious for keeping and displaying.

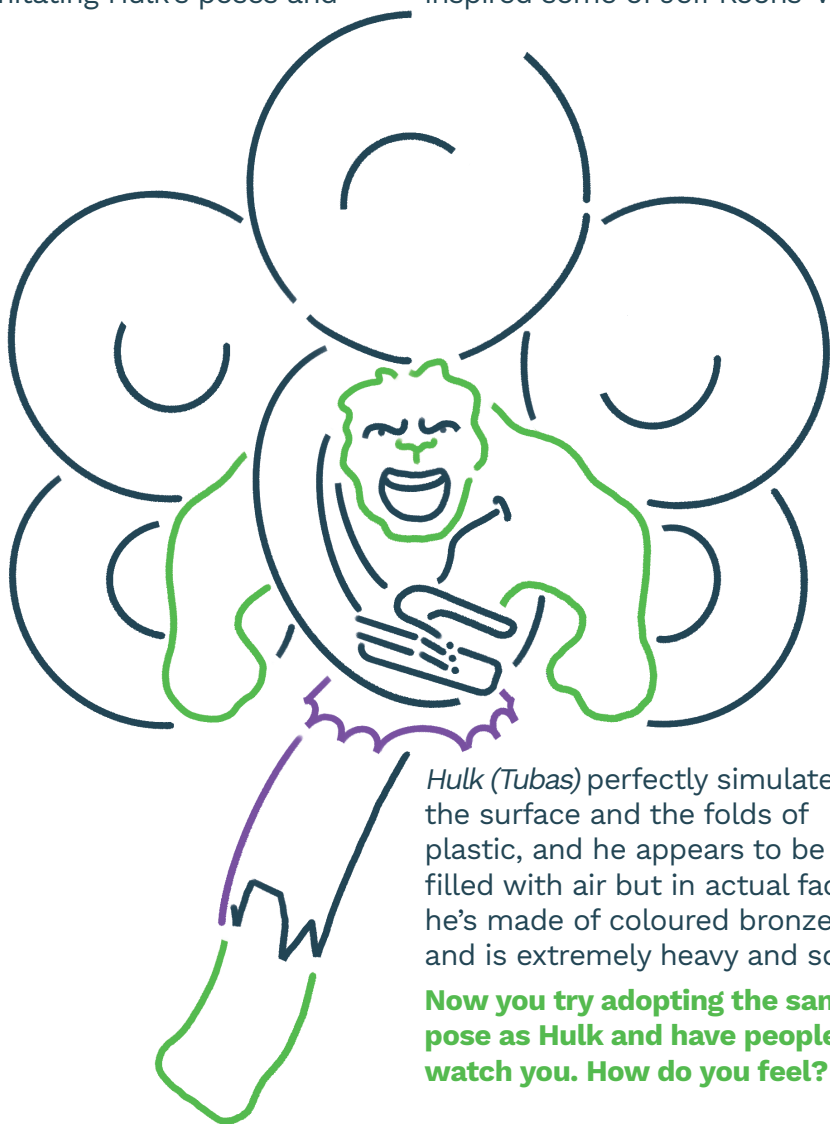
What important object would you put in a showcase like this one to show your friends?

AN INCREDIBLE HULK

ROOM 5

The Incredible Hulk is a superhero with superhuman strength who appears in numerous films and cartoons. When Jeff Koons' son was a boy, he used to have fun imitating Hulk's poses and

expressions while looking at himself in the mirror. There are Hulk toys of every shape and size as well as gadgets, T-shirts and even large inflatable pools that inspired some of Jeff Koons' work.



Hulk (Tubas) perfectly simulates the surface and the folds of plastic, and he appears to be filled with air but in actual fact he's made of coloured bronze and is extremely heavy and solid.

Now you try adopting the same pose as Hulk and have people watch you. How do you feel?

Koons has matched special blue glass balls with reproductions of old paintings and sculptures. These balls, called gazing balls, reflect everything in front of them. Jeff Koons used to see them as a child in the neighbourhood he grew up in because people often use them to beautify their gardens in America.

Use the hole in this page to frame the gazing balls present in the room. From what part of the room can you see the largest number of gazing balls?

GAZING BALL



AT HOME

Place this page on different surfaces and see how the drawing changes. Take a photo and share it on the social media using the hashtag #YourGazingBall

PERFECT FLOWERS

ROOM 7

A multicoloured bird has lots of coloured flowers on his back. Koons wants these flowers to always look perfect just like the surfaces of his sculptures. That's why the flowers are watered and tended every day.

Have you ever taken care of a plant?

Have you ever managed to make it grow and bloom?

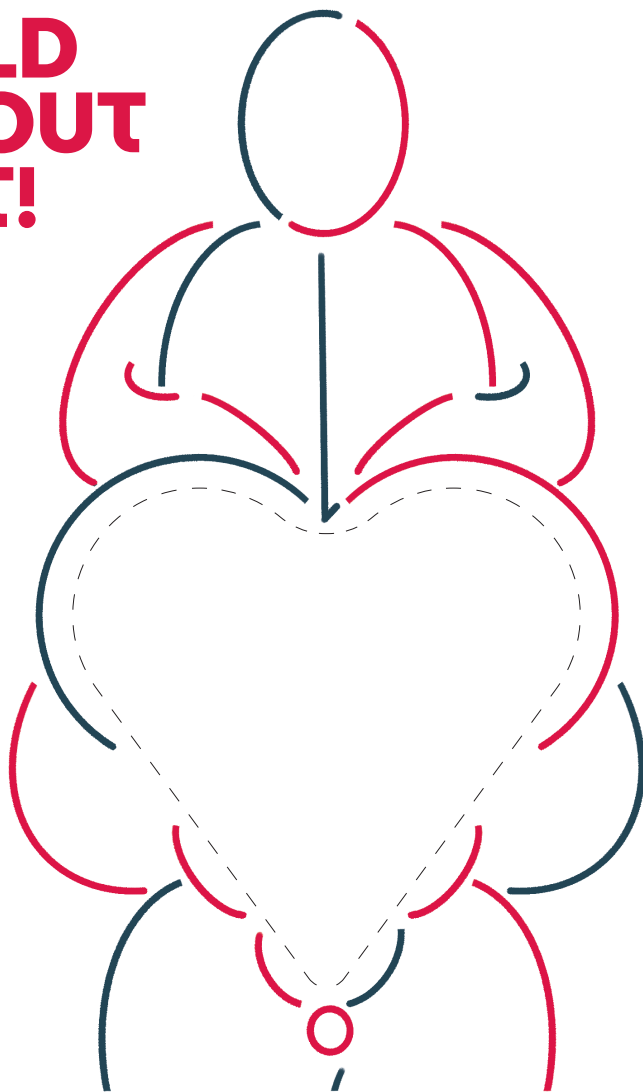


AT HOME

Pick a flower and a few leaves and put them on this page. You can use the oval to put them in. Jot down the date and place you gathered them. Now put the Kit on a bookshelf and leave it. Retrieve it a week later: How have the plants changed? How about a month later?

WILD ABOUT ART!

ROOM 8



Koons loves all art, from the art of our own day right back to the art dating from the origin of mankind when there were no such things as exhibitions or museums. His *Balloon Venus Lespugue (Red)* is inspired by the rounded forms of small prehistoric statues of women that accentuate the parts of their bodies associated with motherhood, such as their breasts and tummies.

Think back on the exhibits you've seen today.

Which is your favourite?

Which one would you like to take home with you?

**The Family Kit is a tool for exploring
the *Jeff Koons. Shine* exhibition
with the whole family.**

The Kit is designed for children aged 6 and upwards, and for adults as well, to have fun with art when visiting the exhibition and to continue the experience at home.

The Kit is one of the tools that the Fondazione Palazzo Strozzi offers families to encourage visitors of all ages to visit its exhibitions and to stimulate people's interest in every form of art.

Discover the other activities on
palazzostrozzi.org/en/educational/

The Family Kit
is a project by



FONDAZIONE
PALAZZO
STROZZI

Project produced with
a generous contribution from

